

# STAINLESS STEEL

accessories with integrated function



Find out our  
key products



**Solution for most applications**



**Easy and intuitive choice**



**Excellent value for money**



**Wide availability**



**Fast delivery**



# Stainless Steel accessories with integrated function

## Main features and certifications

Stainless Steel accessories with integrated function. Available in different versions, functions, and threads. Supplied as standard in compliance to Reach and RoHS directives. Lubricated with synthetic grease long lasting, fully composed by non-toxic elements conforming to FDA Directive section 21 CFR 178 about accidental contact with food (registered NSF H1).



## Stainless Steel stop valves

from page 5.384.1



Series of stainless steel stop valves. Available in version uni-directional, in size from G1/8" to G1/2", with integrated recessed manual override and female banjo.



Code key

Series	Type	Thread M	Thread F	Function	Option
<b>VX</b>	<b>45</b>	<b>14</b>	<b>14</b>	<b>U</b>	<b>K</b>
VX	45	18 = 1/8"	18 = 1/8"	U = Uni-directional	K = Manual override with recessed button
		14 = 1/4"	14 = 1/4"		
		38 = 3/8"	38 = 3/8"		
		12 = 1/2"	12 = 1/2"		

How to order

Series	Type	Thread M	Thread F	Function	Option
<b>VX</b>	<b>45</b>	<b>14</b>	<b>14</b>	<b>U</b>	<b>K</b>

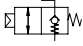
Notes

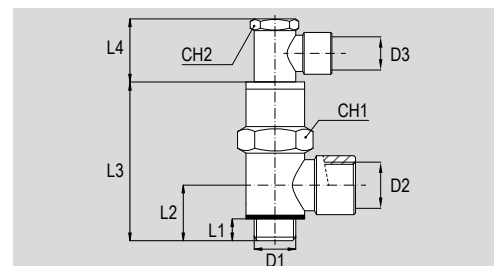
For standard materials see the following page.

# Stainless Steel accessories with integrated function

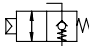
## Stainless Steel stop valves type VX45

### Main features

Type	Description	Symbol
VX45	Uni-directional stop valve. In AISI 316L Stainless Steel.	



### Dimensions

Code	Item	Symbol	D1	D2	D3	L1	L2	L3	L4	CH1	CH2	Weight (g)
024580	VX451818UK		G1/8"	G1/8"	M5x0,8	6	15,5	42	20,5	13	8	-
024581	VX451414UK		G1/4"	G1/4"	M5x0,8	8	18,5	46,5	20,5	17	8	-
024582	VX453838UK		G3/8"	G3/8"	G1/8"	9	21	53,5	19	21	14	-
024583	VX451212UK		G1/2"	G1/2"	G1/8"	10,5	24,5	61,5	19	25	14	-

### Technical data

Type	VX45			
Size	1/8"	1/4"	3/8"	1/2"
Fluid	Filtered compressed air with or without lubrication			
Pressure range	0 ÷ 10 bar			
Piloting pressure range	See page 5.384.2			
Temperature range	-20°C ÷ +150°C			
Parallel threads	UNI - ISO 228 / 1 (BSP)			
Function	See page 5.384.2			
Flow at 6 bar with ΔP 1 bar	170 NI/min	345 NI/min	700 NI/min	1.050 NI/min

### Standard materials

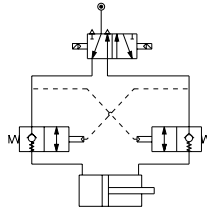
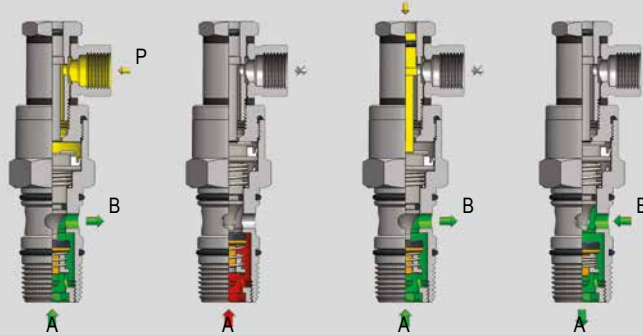
Type	VX45
Body	Stainless Steel AISI 316 L
Piston	Stainless Steel AISI 304
Spring	Stainless Steel AISI 302
Washer	PTFE
Seals	FKM

# Stainless Steel accessories with integrated function

## Stainless Steel stop valves type VX45

### Function

Type VX45



Series of stop valves available in uni-directional version. When mounted in pairs on a cylinder, they block the movement in the event of a sudden drop in piloting pressure.  
By means of the manual release device is possible to manually reset the piston stroke.

### Piloting pressure in function of feeding pressure

