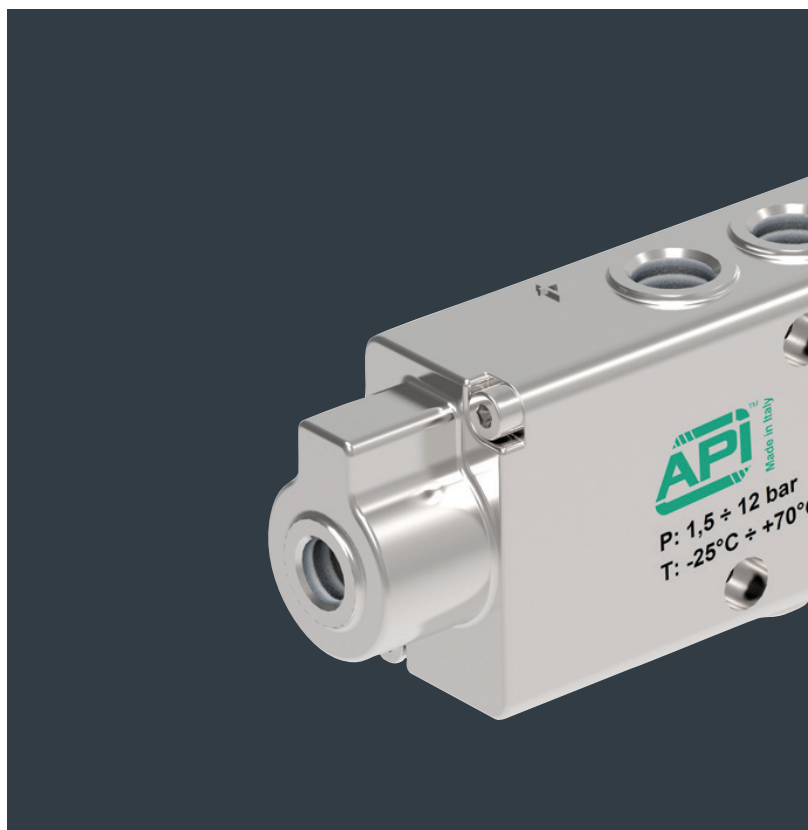


STAINLESS STEEL

air operated valves Series AX1



Find out our
key products



Solution for most applications



Easy and intuitive choice



Excellent value for money



Wide availability



Fast delivery



Main features and certifications

Series of stainless steel spool valves, with in-line connections. Available in size 1/4", air operated, with functions 3/2 pilot/spring normally closed, 3/2 pilot/spring normally open, 3/2 pilot/pilot, 5/2 pilot/spring, 5/2 pilot/pilot and pilot/pilot differential, 5/3 open centres, closed centres and pressurized centres. Supplied as standard with HNBR seals for low temperature (down to -25°), in compliance to Reach and RoHS directives, SIL certified, and conforming to 2014/34/EU ATEX Directive, in classification Ex h.



Series AX1 1/4" 3/2 Pilot/Spring

from page 5.116.10



Series of stainless steel spool valves, with in-line connections, size 1/4" air operated, in function 3/2 pilot/spring normally closed and 3/2 pilot/spring normally open.

Conforming to 2014/34/UE ATEX Directive in classification:

II 2G Ex h IIC T5 Gb

II 2D Ex h IIIC T100°C Db



Series AX1 1/4" 3/2 Pilot/Pilot

from page 5.116.20



Series of stainless steel spool valves, with in-line connections, size 1/4" air operated, in function 3/2 pilot/pilot.

Conforming to 2014/34/UE ATEX Directive in classification:

II 2G Ex h IIC T5 Gb

II 2D Ex h IIIC T100°C Db



Series AX1 1/4" 5/2 Pilot/Spring

from page 5.116.40



Series of stainless steel spool valves, with in-line connections, size 1/4" air operated, in function 5/2 pilot/spring.

Conforming to 2014/34/UE ATEX Directive in classification:

II 2G Ex h IIC T5 Gb

II 2D Ex h IIIC T100°C Db



Series AX1 1/4" 5/2 Pilot/Pilot

from page 5.116.50



Series of stainless steel spool valves, with in-line connections, size 1/4" air operated, in function 5/2 pilot/pilot and 5/2 pilot/pilot differential.

Conforming to 2014/34/UE ATEX Directive in classification:

II 2G Ex h IIC T5 Gb

II 2D Ex h IIIC T100°C Db



Series AX1 1/4" 5/3

from page 5.116.70



Series of stainless steel spool valves, with in-line connections, size 1/4" air operated, in function 5/3 closed centres, 5/3 open centres and 5/3 pressurized centres.


Conforming to 2014/34/UE ATEX Directive in classification:

II 2G Ex h IIC T5 Gb

II 2D Ex h IIIC T100°C Db



Options

| Description | Symbol | Suffix |
|-----------------------------|---|-----------|
| FKM seals -10°C ÷ +150°C |  | V |
| Special versions on request | | /S |

The options, when this is possible, can be combined with each other. For standard options matching see the table below. For code key see from page 5.115.4

Options matching

| Series | Size | Function | ATEX | Standard options matching |
|--------|------|-----------------|----------|---------------------------|
| | | | | V |
| AX1 | 1/4" | 3/2 - 5/2 - 5/3 | Standard | ● |

Key

● allowed matching; – not allowed matching.

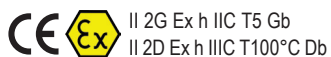
Code key

| Series | Actuation | Size | Function | Options |
|------------|---------------|-------------------------------|--|---------------|
| AX1 | P | 2 | 50 | |
| AX1 | P = Pneumatic | 2 = 1/4" Gas 2N = 1/4" NPT | 30 = 3/2 Normally closed 31 = 3/2 Normally open 32 = 3/2 Pilot/Pilot 50 = 5/2 Pilot/Spring 51 = 5/2 Pilot/Pilot 52 = 5/2 Pilot/Pilot differential 70 = 5/3 Closed Centres 71 = 5/3 Open Centres 72 = 5/3 Pressurized Centres | V = FKM seals |

ATEX note



The valves series AX1 are supplied as standard conforming to 2014/34/EU ATEX Directive



For further information on the ATEX 2014/34/EU Directive, on classifications and protections, see from page III.1

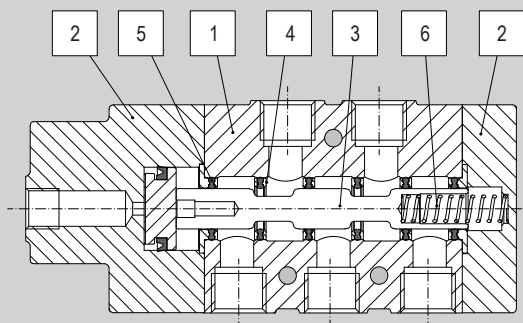
How to order

| Series | Actuation | Size | Function |
|------------|-----------|----------|-----------|
| AX1 | P | 2 | 50 |

Notes

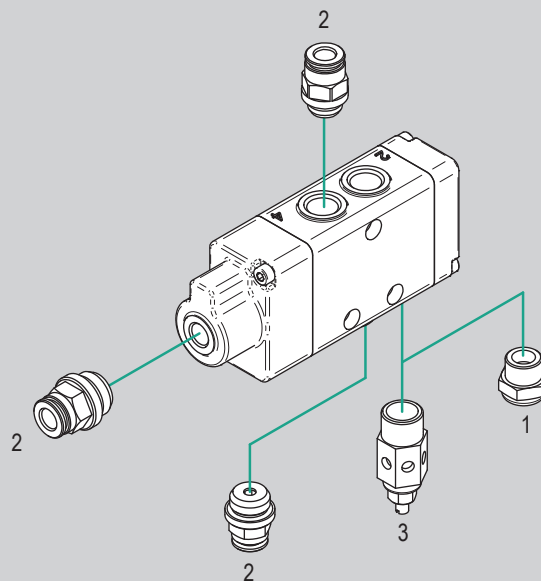
For standard materials, see page 5.115.5.

Standard materials



| Position | Description | Material |
|----------|-------------|---------------------------|
| | | 1/4" |
| | | AX1P.. |
| 1 | Body | Stainless Steel AISI 316L |
| 2 | Covers | Stainless Steel AISI 316L |
| 3 | Spool | Hard anodized aluminium |
| 4 | Distancers | Technopolymer |
| 5 | Seals | HNBR |
| 6 | Spring | Stainless Steel |

Accessories



| N. | Item | Description | Compliance | Matching | Code key page | Data sheet page |
|----|-----------------------------------|-------------------------------------|--|----------|---------------|-----------------|
| | | | | 1/4" | | |
| | | | | AX1P.. | | |
| 1 | AFEX.. AEX.. AEPX.. AERX | Stainless Steel silencers | - | ● | 5.390.1 | |
| 2 | RX.. | Stainless Steel push-in fittings | UNI ISO 228/1 UNI ISO7/1 ISO R/232 | ● | 5.302.1 | |
| 3 | AVRX.. | Stainless Steel silenced regulators | - | ● | 5.375.1 | |

Key

● matching accessory; - not matching accessory

Stainless Steel air operated valves series AX1

1/4", 3/2 pilot/spring



Main features

| Version | Code | Item | Symbol |
|---------------------|---------|---------|--------|
| 3/2 Normally closed | 037002X | AX1P230 | |
| 3/2 Normally open | 037022X | AX1P231 | |



Technical data

| Version | 3/2 Normally closed | 3/2 Normally open |
|-----------------------------|---|--------------------|
| Code | 037002X | 037022X |
| Item | AX1P230 | AX1P231 |
| Size | 1/4" | |
| Fluid | Compressed air with or without lubrication. Lubrication, if started, must be continued. | |
| Pressure range | 1,5 ÷ 12 bar | |
| Temperature range | -25°C ÷ +70°C (standard) | -10°C ÷ +150°C (V) |
| Orifice Ø | 8 mm | |
| Flow at 6 bar with ΔP 1 bar | 1.100 Nl/min. | |
| ATEX compliance | II 2G Ex h IIC T5 Gb II 2D Ex h IIIC T100°C Db | |
| Mounting | In every position | |

Notes

For code and availability of NPT threads, please contact the sales department

Stainless Steel air operated valves series AX1

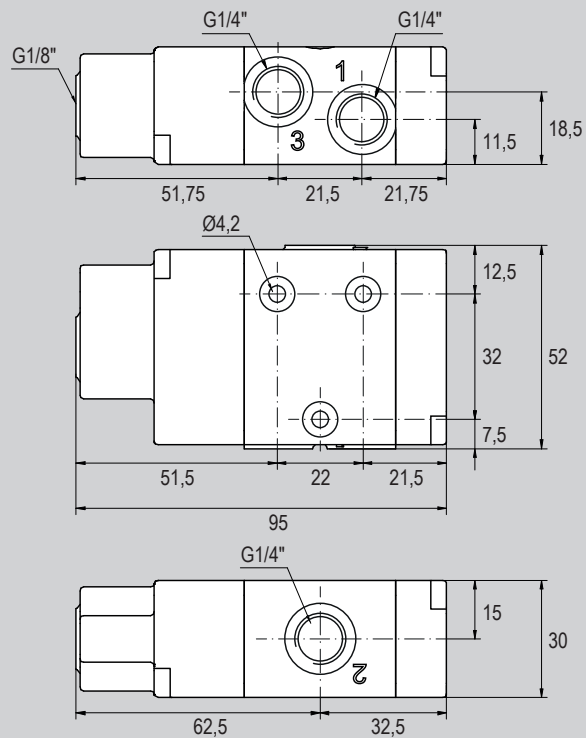
1/4", 3/2 pilot/spring



Standard dimensions

CE ϵ_x II 2G Ex h IIC T5 Gb
II 2D Ex h IIC T100°C Db

Type: **3/2 N.C.**
3/2 N.O.



| Version | Actuation | Symbol | Code | Item |
|--------------------------|-----------|--------|---------|---------|
| 1/4" 3/2 Normally closed | Pneumatic | | 037002X | AX1P230 |
| 1/4" 3/2 Normally open | Pneumatic | | 037022X | AX1P231 |

For availability and code of versions with NPT threads (AX1P2N..), please contact the sales department.

Stainless Steel air operated valves series AX1

1/4", 3/2 pilot/pilot



Main features

| Version | Code | Item | Symbol |
|-----------------|---------|---------|--------|
| 3/2 pilot/pilot | 037023X | AX1P232 | |



Technical data

| | | |
|-----------------------------|---|--------------------|
| Version | 3/2 pilot/pilot | |
| Code | 037023X | |
| Item | AX1P232 | |
| Size | 1/4" | |
| Fluid | Compressed air with or without lubrication. Lubrication, if started, must be continued. | |
| Pressure range | 1 ÷ 12 bar | |
| Temperature range | -25°C ÷ +70°C (standard) | -10°C ÷ +150°C (V) |
| Orifice Ø | 8 mm | |
| Flow at 6 bar with ΔP 1 bar | 1.100 Nl/min. | |
| ATEX compliance | II 2G Ex h IIC T5 Gb II 2D Ex h IIIC T100°C Db | |
| Mounting | In every position (vertical not recommended when in presence of vibrations) | |

Notes

For code and availability of NPT threads, please contact the sales department

Stainless Steel air operated valves series AX1

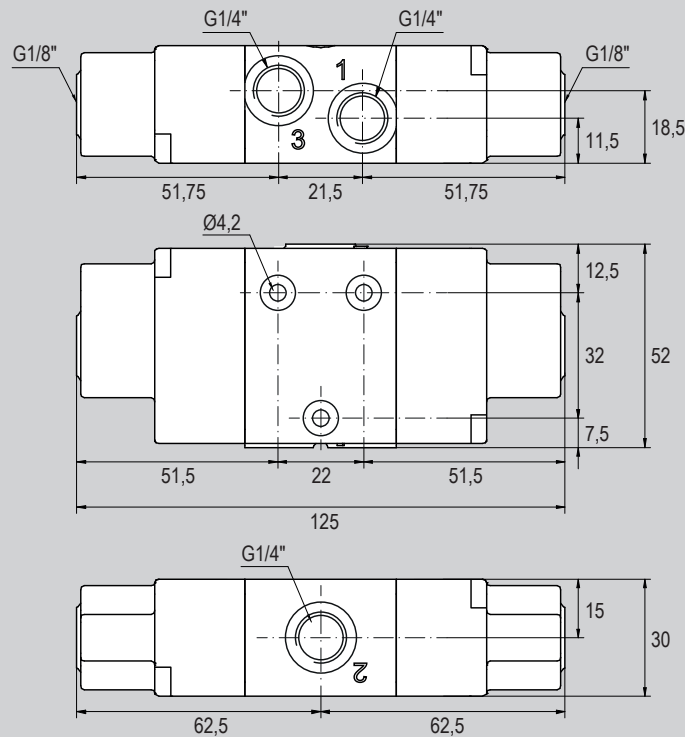
1/4", 3/2 pilot/pilot



Standard dimensions

Type: 3/2 pilot/pilot

CE II 2G Ex h IIC T5 Gb
II 2D Ex h IIIC T100°C Db



| Version | Actuation | Symbol | Code | Item |
|----------------------|-----------|--------|---------|---------|
| 1/4" 3/2 pilot/pilot | Pneumatic | | 037023X | AX1P232 |

For availability and code of versions with NPT threads (AX1P2N..), please contact the sales department.

Stainless Steel air operated valves series AX1

1/4", 5/2 pilot/spring



Main features

| Version | Code | Item | Symbol |
|------------------|---------|---------|--------|
| 5/2 pilot/spring | 037001X | AX1P250 | |



Technical data

| | | |
|-----------------------------|---|--------------------|
| Version | 5/2 pilot/spring | |
| Code | 037001X | |
| Item | AX1P250 | |
| Size | 1/4" | |
| Fluid | Compressed air with or without lubrication. Lubrication, if started, must be continued. | |
| Pressure range | 1,5 ÷ 12 bar | |
| Temperature range | -25°C ÷ +70°C (standard) | -10°C ÷ +150°C (V) |
| Orifice Ø | 8 mm | |
| Flow at 6 bar with ΔP 1 bar | 1.100 Nl/min. | |
| ATEX compliance | II 2G Ex h IIC T5 Gb II 2D Ex h IIC T100°C Db | |
| Mounting | In every position | |

Notes

For code and availability of NPT threads, please contact the sales department

Stainless Steel air operated valves series AX1

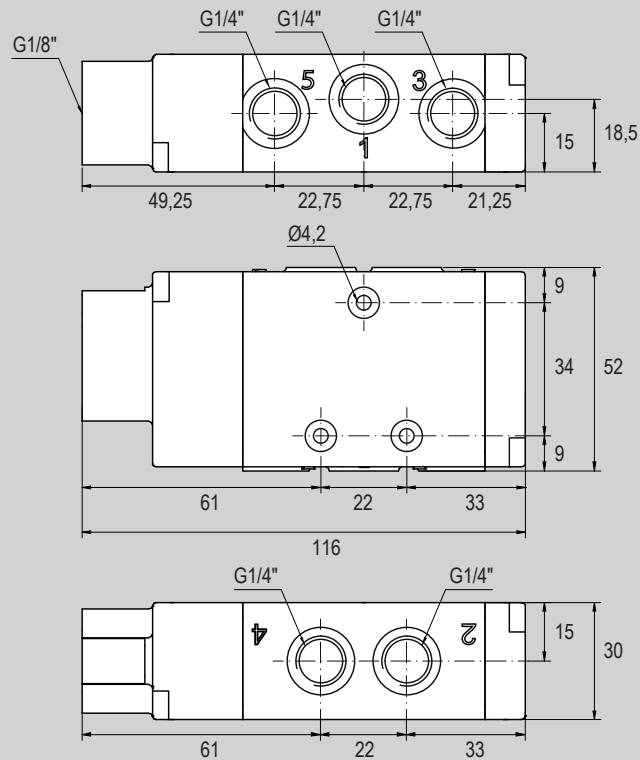
1/4", 5/2 pilot/spring



Standard dimensions

Type: 5/2 pilot/spring

CE II 2G Ex h IIC T5 Gb
II 2D Ex h IIIIC T100°C Db



| Version | Actuation | Symbol | Code | Item |
|-----------------------|-----------|--------|---------|---------|
| 1/4" 5/2 pilot/spring | Pneumatic | | 037001X | AX1P250 |

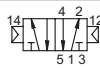
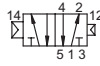
For availability and code of versions with NPT threads (AX1P2N..), please contact the sales department.

Stainless Steel air operated valves series AX1

1/4", 5/2 pilot/pilot



Main features

| Version | Code | Item | Symbol |
|------------------------------|---------|---------|---|
| 5/2 pilot/pilot | 037024X | AX1P251 |  |
| 5/2 pilot/pilot differential | 037025X | AX1P252 |  |



Technical data

| Version | 5/2 pilot/pilot | 5/2 pilot/pilot differential |
|-----------------------------|---|------------------------------|
| Code | 037024X | 037024X |
| Item | AX1P251 | AX1P252 |
| Size | 1/4" | |
| Fluid | Compressed air with or without lubrication. Lubrication, if started, must be continued. | |
| Pressure range | 1 ÷ 12 bar | |
| Temperature range | -25°C ÷ +70°C (standard) | -10°C ÷ +150°C (V) |
| Orifice Ø | 8 mm | |
| Flow at 6 bar with ΔP 1 bar | 1.100 NI/min. | |
| ATEX compliance | II 2G Ex h IIC T5 Gb II 2D Ex h IIC T100°C Db | |
| Mounting | In every position (vertical not recommended when in presence of vibrations) | |

Notes

For code and availability of NPT threads, please contact the sales department

Stainless Steel air operated valves series AX1

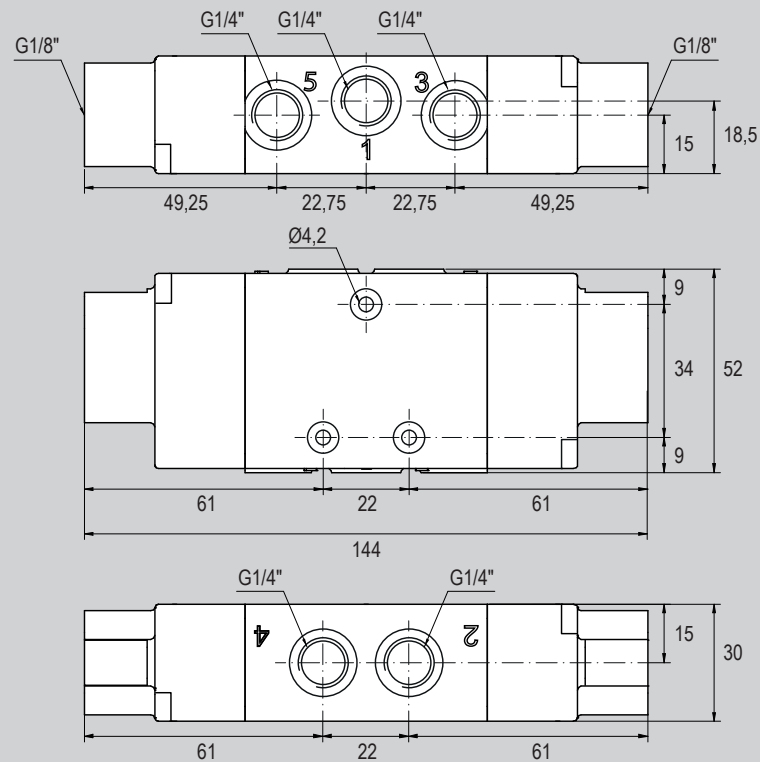
1/4", 5/2 pilot/pilot



Standard dimensions

CE ϵ_x II 2G Ex h IIC T5 Gb
II 2D Ex h IIIIC T100°C Db

Type: **5/2 pilot/pilot**
5/2 pilot/pilot differential



| Version | Actuation | Symbol | Code | Item |
|-----------------------------------|-----------|--------|---------|---------|
| 1/4" 5/2 pilot/pilot | Pneumatic | | 037024X | AX1P251 |
| 1/4" 5/2 pilot/pilot differential | Pneumatic | | 037025X | AX1P252 |

For availability and code of versions with NPT threads (AX1P2N..), please contact the sales department.

Stainless Steel air operated valves series AX1

1/4", 5/3



Main features

| Version | Code | Item | Symbol |
|-------------------------|---------|---------|--------|
| 5/3 Closed Centres | 037026X | AX1P270 | |
| 5/3 Open Centres | 037027X | AX1P271 | |
| 5/3 Pressurized Centres | 037028X | AX1P272 | |



Technical data

| Version | 5/3 Closed Centres | 5/3 Open Centres | 5/3 Pressurized Centres |
|-----------------------------|---|--------------------|-------------------------|
| Code | 037026X | 037027X | 037028X |
| Item | AX1P270 | AX1P271 | AX1P272 |
| Size | 1/4" | | |
| Fluid | Compressed air with or without lubrication. Lubrication, if started, must be continued. | | |
| Pressure range | 2,5 ÷ 12 bar | | |
| Temperature range | -25°C ÷ +70°C (standard) | -10°C ÷ +150°C (V) | |
| Orifice Ø | 8 mm | | |
| Flow at 6 bar with ΔP 1 bar | 1.100 Nl/min. | | |
| ATEX compliance | II 2G Ex h IIC T5 Gb II 2D Ex h IIIC T100°C Db | | |
| Mounting | In every position | | |

Notes

For code and availability of NPT threads, please contact the sales department

Stainless Steel air operated valves series AX1

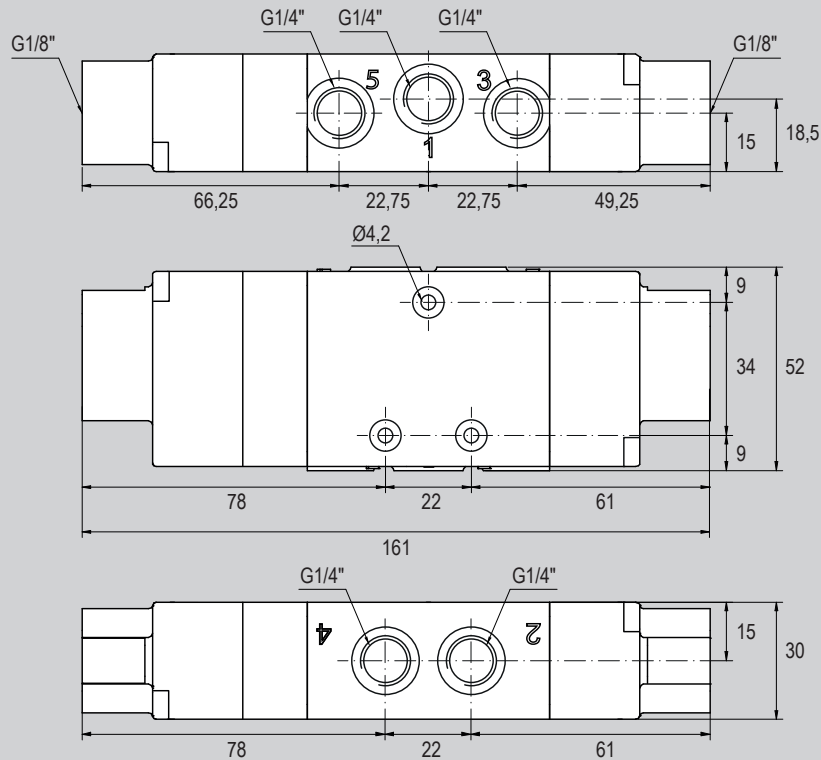
1/4", 5/3



Standard dimensions

CE II 2G Ex h IIC T5 Gb
II 2D Ex h IIIIC T100°C Db

Type: **5/3 C.C.**
5/3 O.C.
5/3 P.C.



| Version | Actuation | Symbol | Code | Item |
|------------------------------|-----------|--------|------|------|
| 1/4" 5/3 Closed Centres | Pneumatic | | | |
| 1/4" 5/3 Open Centres | Pneumatic | | | |
| 1/4" 5/3 Pressurized Centres | Pneumatic | | | |

For availability and code of versions with NPT threads (AX1P2N..), please contact the sales department.